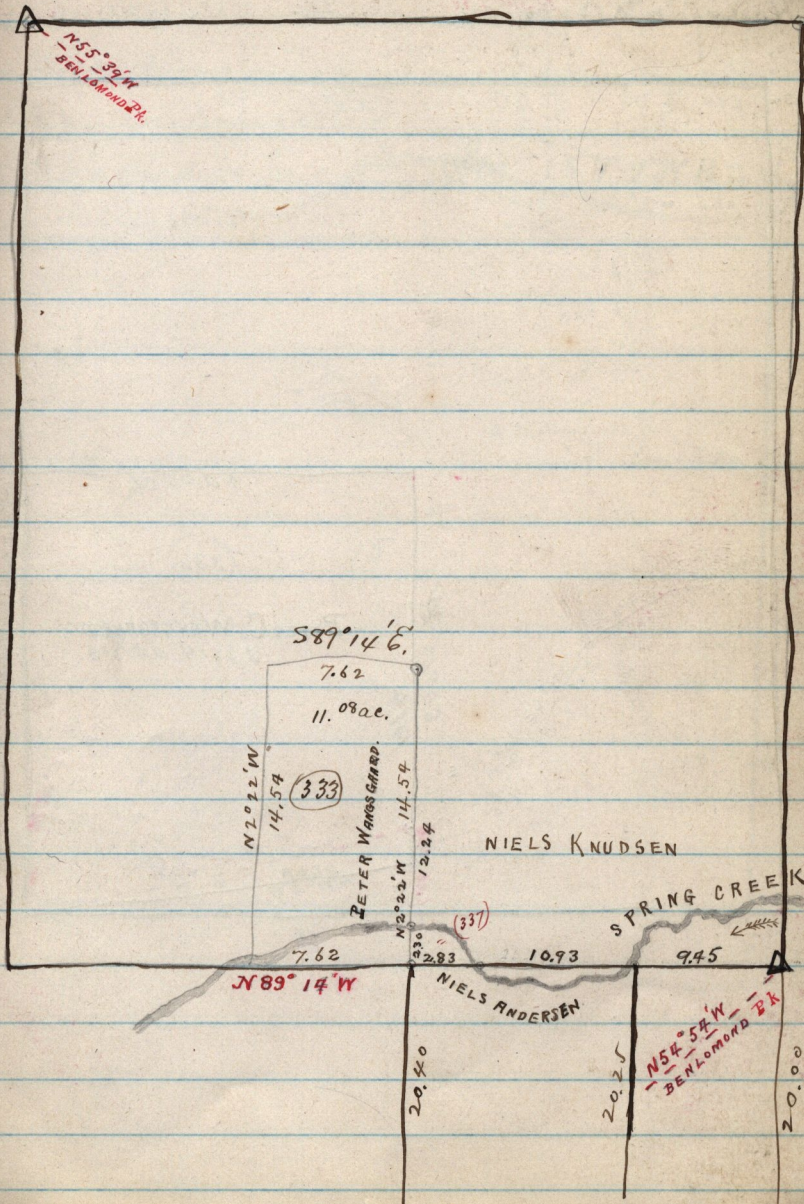


Nov. 10-1885.

W¹/₂ ENTERED BY NIELS KNUDSEN & afterwards transferred to Janis Wiggins

E¹/₂ ENTERED BY W.W. BRUNSEN. N. W. ¹/₄ Sec. 12. T6NR1E.



N55°39'W
BEN LOMOND EX.

S89°14' E

N20°22' W

PETER WANGS GAARD.

NIELS KNUDSEN

SPRING CREEK

NIELS ANDERSEN

N89°14' W

N54°54' W
BEN LOMOND EX.